

pmb

# CATALOG

## OF PRODUCTS





LINE  
DAKOTA  
SINGLE LEVER  
LAVATORY

---

LINE  
AURA  
WASHBASIN  
PEDESTAL



## DAKOTA LINE

MEMPHIS	04
VERMONT	06
MAINE	08
AUSTIN	10
MIAMI	12
DAKOTA	16
DENVER	18
CINCINNATI	20

## TAPS

ILLINOIS	22
ISABELLA	23
ARIZONA	23
LAVATORY KEY	24
WASHING MACHINE KEY	24

## ACCESSORIES

YORK	25
BENTON	26

## COMPLEMENTS

AURA TOILETS	27
AURA HANDSINK	28

# Memphis line

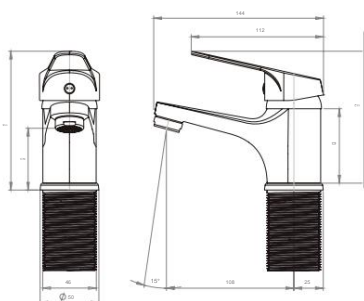


SINK MIXER

COD. 20MH5003400

- Handle with 100° rotation that allows mixing the water temperature.
- Connection: By 2 flexible M10 x 1/2" of 35 cm.
- Closure type: 40 mm ceramic cartridge.
- Material: Brass (Copper and Zinc Alloy).
- Complies with water saving regulations (4-9 lt/min. A 3 bares).
- Complies with Chilean standard Nch 700-2011.

✓ Includes: Installation set by fixing nut.

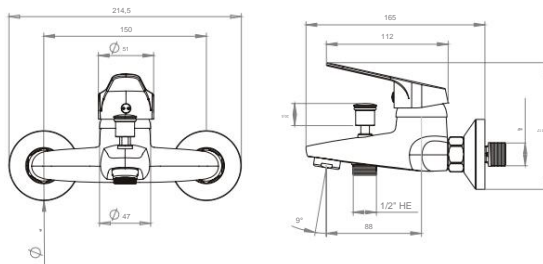


SINGLE LEVER TUB SHOWER

COD. 2MMH520300

- Handle with 100° rotation that allows mixing the water temperature.
- Connection: By 2 SG 1/2"x3/4 eccentrics.
- Closure type: 40mm ceramic cartridge.
- Material: Brass (Copper and Zinc Alloy).
- Complies with water saving regulations (12 Lt/Min. at 3 bars).
- Complies with Chilean standard Nch 700-2011.

✓ Includes: Installation set for 2 S-Connector, 2 bells, flexible 1.50 mts., shower and bracket.



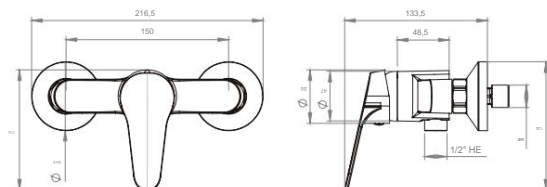


### SHOWER MIXER

**COD. 20MH5303000**

- Handle with 100° rotation that allows mixing the water temperature.
- Connection: 2 S-Connector SG 1/2"x3/4.
- Closure type: 40mm ceramic cartridge.
- Material: Brass (Copper and Zinc Alloy).
- Complies with water saving regulations (12 Lt/Min. at 3 bars).
- Complies with Chilean standard Nch 700-2011.

✓ Includes: 2 S-Connector, 2 bells, flexible 1.50 mts., shower and bracket.

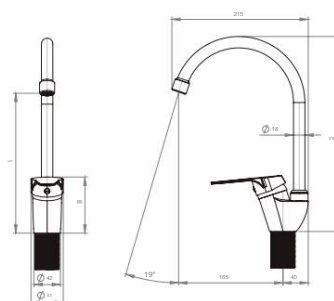


### KITCHEN FAUCET MIXER

**COD. 20MH5603400**

- Handle with 100° rotation that allows mixing the water temperature.
- Connection: By 2 flexible M10 x 1/2" 35 cm.
- Closure type: 40 mm ceramic cartridge.
- Material: Brass (Copper and Zinc Alloy).
- Complies with water saving regulations (4-9lt/min. A3bares).
- Complies with Chilean standard Nch 700-2011.

✓ Includes: Installation set by fixing nut.





# Vermont line

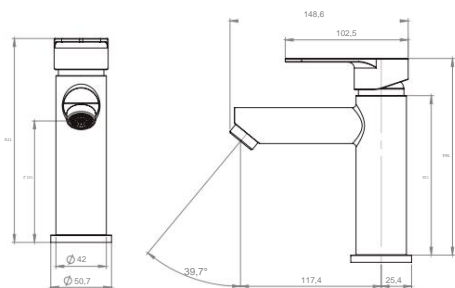


SINGLE LEVER SINK

COD. 20VT5003400

- Handle with a 90° turn that allows mixing the water temperature.
- Connection: By 2 flexible M10 x 1/2" of 35 cm.
- 35 mm ceramic closure.
- Material: Stainless Steel SS304.
- Termination: Satin Stainless.
- Complies with water saving regulations (4-9 Lt/min. at 3 bars).
- Complies with Chilean standard Nch 700-2011.

✓ Includes: Installation set with fixing nut and 2 flexibles.

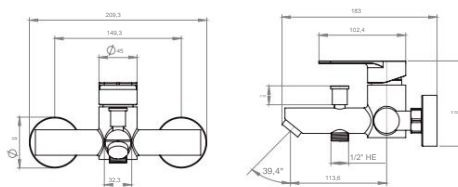


SINGLE LEVER TUB SHOWER

COD. 20VT5203400

- Handle with a 90° turn that allows mixing the water temperature.
- Connection: 2 cams SG 1/2 "x 3/4".
- 35 mm ceramic closure.
- Material: Stainless Steel SS304.
- Satin Stainless Finish.
- Complies with water saving regulations (12 Lt/Min. at 3 bars).
- Complies with Chilean standard Nch 700-2011.

✓ Includes: 2 S-Connector, 2 bells, flexible 1.50 mts., shower and bracket.

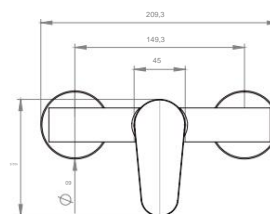


SHOWER MIXER

COD. 20VT5303400

- Handle with a 90° turn that allows mixing the water temperature.
- Connection: P 2 S-Connector SG 1/2 "x 3/4".
- 35 mm ceramic closure.
- Material: Stainless Steel SS304.
- Satin Stainless Finish.
- Complies with water saving regulations (12 Lt/Min. at 3 bars).
- Complies with Chilean standard Nch 700-2011.

✓ Includes: 2 S-Connector, 2 bells, flexible 1.50 mts., shower and bracket.



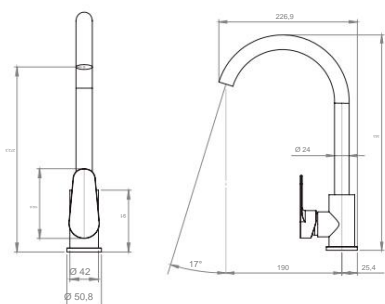


### KITCHEN FAUCET MIXER

**COD. 20VT5603400**

- Handle with a 90° turn that allows mixing the water temperature.
- Connection: By 2 flexible M10 x 1/2" of 35 cm.
- Closure type: 35 mm ceramic cartridge.
- Material: Stainless Steel SS304.
- Satin Stainless Finish.
- Complies with water saving regulations (12 Lt/Min. a 3 bares).
- Complies with Chilean standard Nch 700-2011.

✓ Includes: Installation set with fixing nut and 2 flexibles.

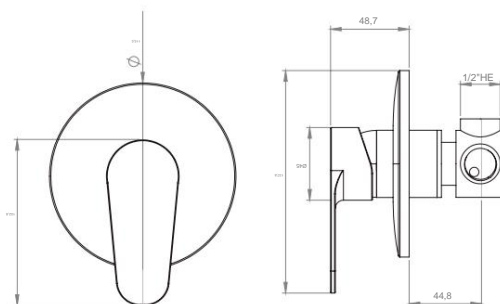


### IN WALL SHOWER MIXER

**COD. 20VT5703400**

- Handle with a 90° turn that allows mixing the water temperature.
- Connection: to wall, with direct connection to pipes.
- Closure type: 40 mm ceramic cartridge.
- Material: Stainless Steel SS304.
- Satin Stainless Finish.
- Complies with water saving regulations (12 Lt/Min. at 3 bars).
- Complies with Chilean standard Nch 700-2011.

✓ Includes: Installation set for 1/2" HI threaded union (body).



# Maine line

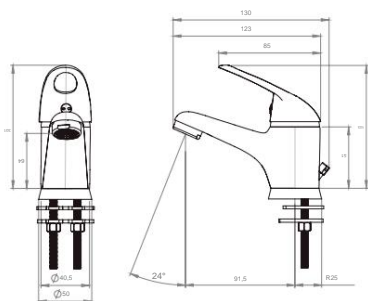


FULL KIT BASIN TAP

COD. 20MN5003000

- Handle with a 90° turn that allows mixing the water temperature.
- Connection: By 2 flexible M10 x 1/2" of 35 cm.
- Closure type: 35 mm ceramic cartridge.
- Material: Brass (Copper and Zinc Alloy).
- Complies with water saving regulations (4-9 lt/min. A 3 bares).
- Complies with Chilean standard Nch 700-2011.

✓ Includes: Horseshoe fixing installation set, 2 flexibles.

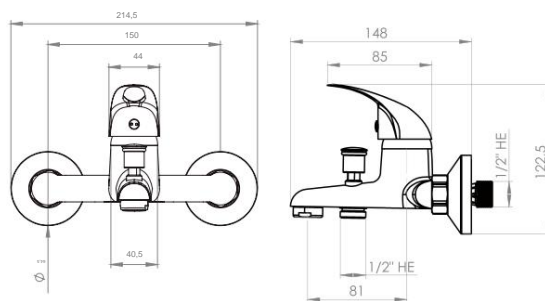


SINGLE LEVER TUB SHOWER

COD. 20MN5203000

- Handle with a 90° turn that allows mixing the water temperature.
- Connection: 2 S-Connector SG 1/2 "x 3/4".
- Closure type: 35mm ceramic cartridge.
- Material: Brass (Copper and Zinc Alloy).
- Complies with water saving regulations (12 Lt/Min. a 3 bares).
- Complies with Chilean standard Nch 700-2011.

✓ Includes: 2 S-Connector, 2 bells, flexible 1.50 mts., shower and bracket.





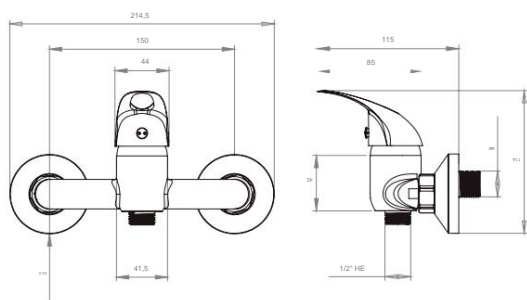


### SHOWER MIXER

COD. 20MN5303000

- Handle with a 90° turn that allows mixing the water temperature.
- Connection: 2 S-Connector SG 1/2 "x 3/4".
- Closure type: 35mm ceramic cartridge.
- Material: Brass (Copper and Zinc Alloy).
- Complies with water saving regulations (12 Lt/Min. at 3 bars).
- Complies with Chilean standard Nch 700-2011.

✓ Includes: 2 S-Connector, 2 bells, flexible 1.50 mts., shower and bracket.

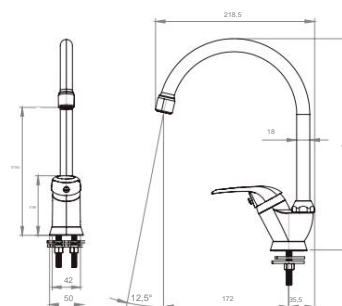


### KITCHEN FAUCET MIXER

COD. 20MN5603000

- Handle with 100° rotation that allows mixing the water temperature.
- Connection: By 2 flexible M10 x 1/2" of 35 cm.
- Closure type: 40 mm ceramic cartridge.
- Material: Brass (Copper and Zinc Alloy).
- Complies with water saving regulations (4-9 lt/min. A 3 bars).
- Complies with Chilean standard Nch 700-2011.

✓ Includes: Horseshoe fixing installation set, 2 flexibles.



# Austin line

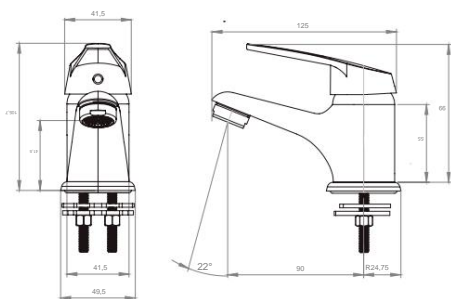


FULL KIT SANITARIO VERTICAL

COD. 20AS5003400

- Handle with 100° rotation that allows mixing the water temperature.
- Connection: By 2 flexible M10 x 1/2" of 35 cm.
- Closure type: 40 mm ceramic cartridge.
- Material: Brass (Copper and Zinc Alloy).
- Complies with water saving regulations (4-9 lt/min. A 3 bares).
- Complies with Chilean standard Nch 700-2011.

✓ Includes: Installation set with fixing nut and 2 flexibles.

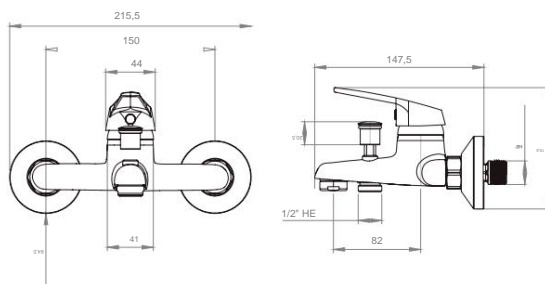


SINGLE LEVER TUB SHOWER

COD. 20AS5203400

- Handle with a 90° turn that allows mixing the water temperature.
- Connection: By 2 S-Connector SG 1/2 "x 3/4".
- Closure type: 35 mm ceramic cartridge.
- Material: Brass (Copper and Zinc Alloy).
- Complies with water saving regulations (12 Lt/Min. a 3 bares).
- Complies with Chilean standard Nch 700-2011.

✓ Includes: 2 S-Connector, 2 bells, flexible 1.50 mts., shower and bracket.



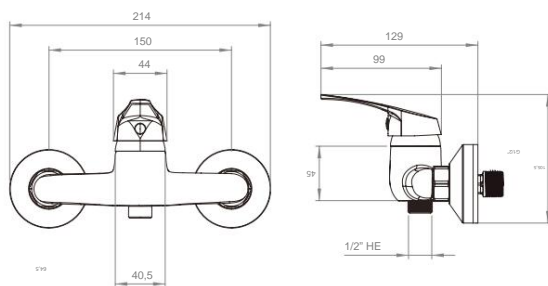


SHOWER MIXER

COD. 20AS5303400

- Handle with a 90° turn that allows mixing the water temperature.
- Connection: By 2 S-Connector SG 1/2" x 3/4".
- Closure type: 35 mm ceramic cartridge.
- Material: Brass (Copper and Zinc Alloy).
- Complies with water saving regulations (12 Lt/Min. a 3 bares).
- Complies with Chilean standard Nch 700-2011.

✓ Includes: 2 S-Connector, 2 bells, flexible 1.50 mts., shower and bracket.

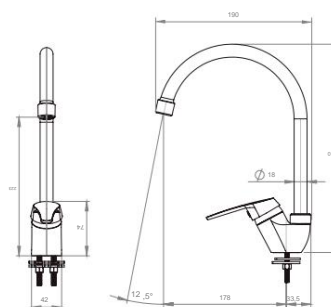


KITCHEN FAUCET MIXER

COD. 20AS5603400

- Handle with a 90° turn that allows mixing the water temperature.
- Connection: By 2 flexible M10 x 1/2" of 35 cm.
- Closure type: 35 mm ceramic cartridge.
- Material: Brass (Copper and Zinc Alloy).
- Complies with water saving regulations (4-9 lt/min. A 3 bares).
- Complies with Chilean standard Nch 700-2011.

✓ Includes: Installation set by fixing nut.



# Miami line

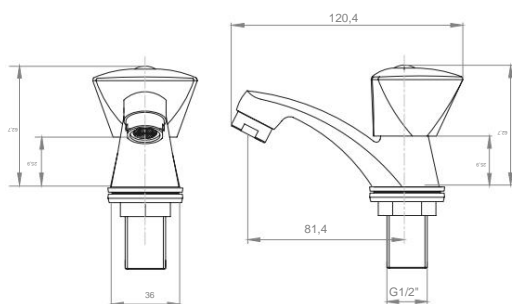


WASH BASIN FAUCET

COD. 20PL0101998

- Opening of the water passage with counterclockwise rotation.
- Brass body (Copper and Zinc Alloy).
- Connection: By 1 flexible M10 x 1/2" of 35 cm.
- 1/4 turn stem.
- Complies with water saving regulations (4-9 lt/min. at 3 bars).
- Complies with Chilean standard Nch 700-2011.

✓ Includes: Installation set by nut by plastic nut.

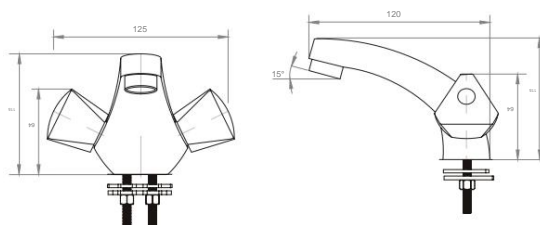


MONOBLOCK WASHBASIN

COD. 20PL3505000

- Opening of the water passage with counterclockwise rotation.
- Brass body (Copper and Zinc Alloy).
- Connection: By 1 flexible M10 x 1/2" of 35 cm.
- 1/4 turn stem.
- Complies with water saving regulations (4-9 lt/min. at 3 bars).
- Complies with Chilean standard Nch 700-2011.

✓ Includes: Installation set for horseshoe fixation.





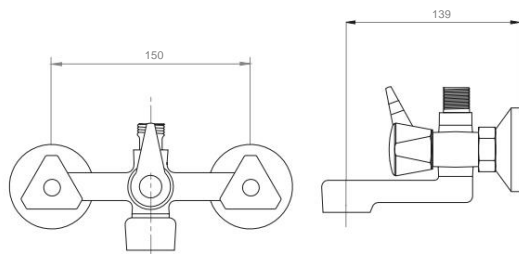


TUB SHOWER FAUCET

COD.20PL1005000

- Handle with anticlockwise opening.
- Connection: By 2 S-Connector SG 1/2 "x 3/4".
- Non-displaceable stem.
- Material: Brass (Copper and Zinc Alloy).
- Complies with water saving regulations (12 Lt/ Min. at 3 bars).
- Complies with Chilean standard Nch 700-2011.

✓ Includes: 2 S-Connector, 2 bells, flexible 1.50 mts., shower and bracket.

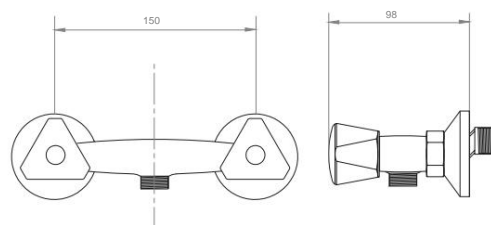


SHOWER FAUCET

COD. 20PL2505000

- Handle with anticlockwise opening.
- Connection: By 2 S-Connector SG 1/2 "x 3/4".
- Non-displaceable stem.
- Material: Brass (Copper and Zinc Alloy).
- Complies with water saving regulations (12 Lt/ Min. at 3 bars).
- Complies with Chilean standard Nch 700-2011.

✓ Includes: 2 S-Connector, 2 bells, flexible 1.50 mts., shower and bracket.



# Miami line

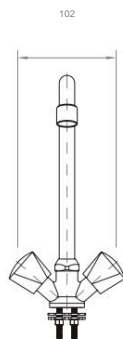


DOUBLE HANDLE  
KITCHEN FAUCET

COD. 20PL4005000

- Opening of the water passage with counterclockwise rotation.
- Connection: By 2 flexible M10 x 1/2" of 35 cm.
- Brass body (Copper and Zinc Alloy).
- 1/4 turnstem.
- Complies with water saving regulations (4-9 lt/min. at 3 bars).
- Complies with Chilean standard Nch 700-2011.

Includes: Installation set for horseshoe fixation.

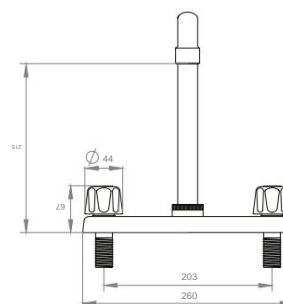


KITCHEN FAUCET DOUBLE HANDLE  
WITH BASE

COD. 20PL1003100

- Opening of the water passage with counterclockwise rotation.
- Connection: By 2 flexible M10 x 1/2" of 35 cm.
- High resistance polymer body.
- 1/4 turnstem.
- Complies with water saving regulations (4-9 lt/min. A 3 bares).
- Complies with Chilean standard Nch 700-2011.

Includes: Installation set by nut BY plastic nut.



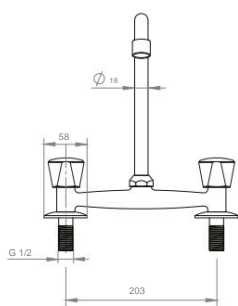


DOUBLE HANDLE  
KICTHEN FAUCET

COD. 20PL1005000

- Opening of the water passage with counterclockwise rotation.
- Connection: By 2 flexible M10 x 1/2" of 35 cm.
- Brass body (Copper and Zinc Alloy).
- 1/4 turnstem.
- Complies with water saving regulations (4-9 lt/min. at 3 bars).
- Complies with Chilean standard Nch 700-2011.

✓ Includes: Installation set by nut BY plastic nut.

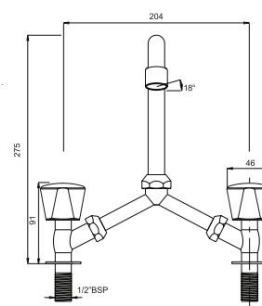


DOUBLE HANDLE  
KICTHEN FAUCET V

COD. 20PL1503000

- Opening of the water passage with counterclockwise rotation.
- Connection: By 2 flexible M10 x 1/2" of 35cm.
- Metallic body.
- 1/4 turn stem.
- Complies with water saving regulations (4-9 lt/min. at 3 bars).
- Complies with Chilean standard Nch 700-2011.

✓ Includes: Installation set by nut BY plastic nut.



# Dakota line

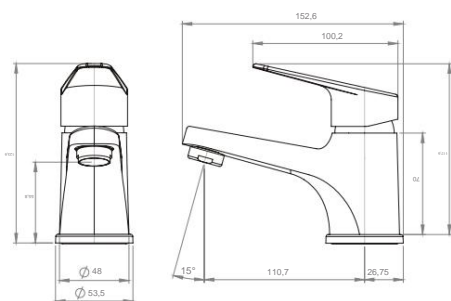


SINK MIXER

COD. 20DK5003400

- Handle with a 90° turn that allows mixing the water temperature.
  - Connection: by 2 flexible M10 x 1/2" of 35 cm.
  - Closure type: 35 mm ceramic.
  - Material: High resistance polymer.
  - Complies with water saving regulations (Less than 9 Lt/Min. at 3 bars).
  - CVS compliant, with restrictor application. (Maximum flow 8 Lts./min. at 4 bars).
- Complies with Chilean standard NCH700-2011.

✓ Includes: Installation set by fixing nut.

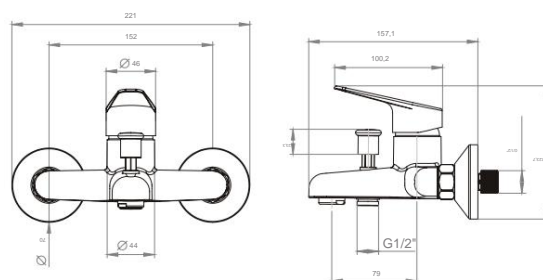


SINGLE LEVER TUB SHOWER

COD. 20DK5203400

- Handle with a 90° turn that allows mixing the water temperature.
  - Connection: By 2 S-Connector SG 1/2 "x 3/4".
  - Closure type: 35 mm ceramic.
  - Material: High resistance polymer.
  - Complies with water saving regulations (Less than 9 Lt/Min. at 3 bars).
  - CVS compliant, with restrictor application. (Maximum flow 8 Lts./min. at 5.5 bars).
- Complies with Chilean standard NCH700-2011.

✓ Includes: 2 S-Connector, 2 bells, flexible 1.50 mts., shower and bracket.





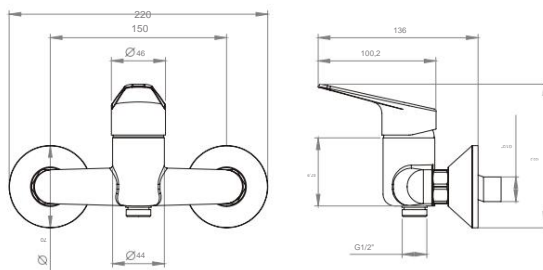


SHOWER MIXER

COD. 20DK5303400

- Handle with a 90° turn that allows mixing the water temperature.
- Connection: By 2 S-Connector SG 1/2 "x 3/4".
- Closure type: 35 mm ceramic.
- Material: High resistance polymer.
- Complies with water saving regulations (Less than 9 Lt/Min. at 3 bars).
- CVS compliant, with restrictor application. (Maximum flow 8 Lts./min. at 5.5 bars).
- Complies with Chilean standard NCH700-2011.

✓ Includes: 2 S-Connector, 2 bells, flexible 1.50 mts., shower and bracket.

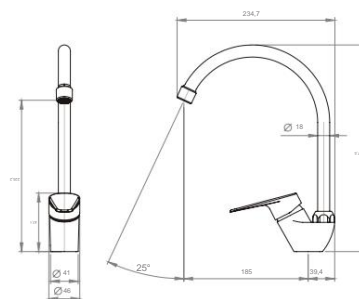


KITCHEN FAUCET MIXER

COD. 20DK5603400\_1

- Handle with a 90° turn that allows mixing the water temperature.
- Connection: by 2 flexible M10 x 1/2" of 35 cm.
- Closure type: 35 mm ceramic.
- Material: High resistance polymer.
- Complies with water saving regulations (Less than 9 Lt/Min. at 3 bars).
- CVS compliant, with restrictor application. (Maximum flow 8 Lts./min. at 4 bars).
- Complies with Chilean standard NCH700-2011.

✓ Includes: Installation set for horseshoe fixation and 2 flexibles.



# Denver Line

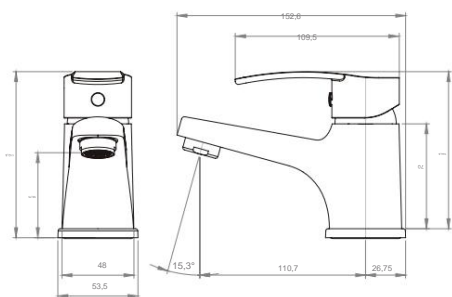


SINK MIXER

COD. 20DV5003000

- Handle with a 90° turn that allows mixing the water temperature.
- Connection: by 2 flexible M10 x 1/2" of 35 cm.
- Closure type: 35 mm ceramic.
- Material: High resistance polymer.
- Complies with water saving regulations (Less than 4-9 Lt/Min. at 3 bars).
- Complies with Chilean standard NCH 700-2011.

✓ Includes: Installation set for horseshoe fixation and 2 flexibles.

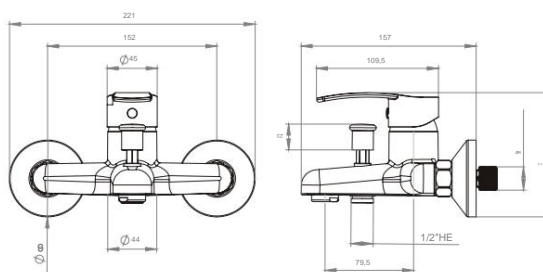


SINGLE LEVER TUB SHOWER

COD. 20DV5203000

- Handle with a 90° turn that allows mixing the water temperature.
- Connection: By 2 S-Connector SG 1/2 "x 3/4".
- Closure type: 35 mm ceramic.
- Material: High resistance polymer.
- Complies with water saving regulations (12 Lt/Min. at 3 bars).
- Complies with Chilean standard NCH 700-2011.

✓ Includes: Installation set by fixing nut.



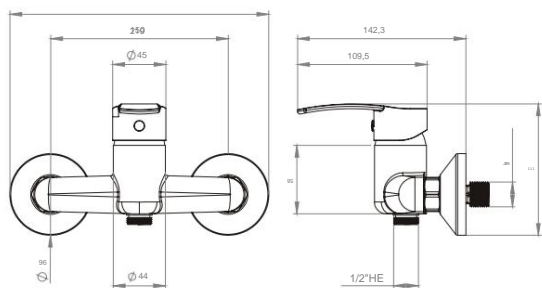


SHOWER MIXER

COD. 20DV5303000

- Handle with a 90° turn that allows mixing the water temperature.
- Connection: By 2 S-Connector SG 1/2 "x 3/4".
- Closure type: 35 mm ceramic.
- Material: High resistance polymer.
- Complies with water saving regulations (12 Lt/Min. at 3 bars).
- Complies with Chilean standard NCH 700-2011.

✓ Includes: 2 S-Connector, 2 bells, flexible 1.50 mts., shower and bracket.

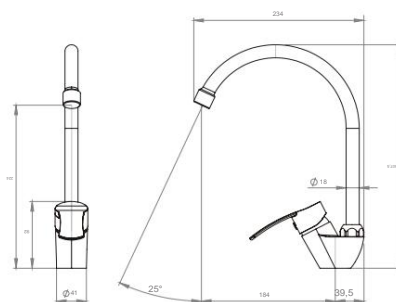


KITCHEN FAUCET MIXER

COD. 20DV5603000

- Handle with a 90° turn that allows mixing the water temperature.
- Connection: By 2 S-Connector SG 1/2 "x 3/4".
- Closure type: 35 mm ceramic.
- Material: High resistance polymer.
- Complies with water saving regulations (12 Lt/Min. at 3 bars).
- Complies with Chilean standard NCH 700-2011.

✓ Includes: Installation set for horseshoe fixation and 2 flexibles.



# Cincinnati line

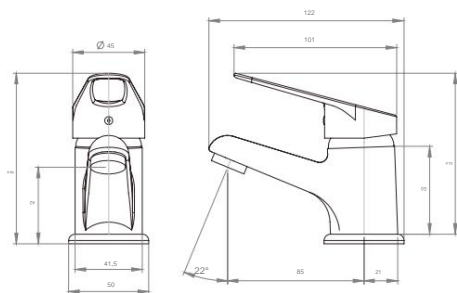


SINK MIXER

COD. 20CI5003000

- Handle with a 90° turn that allows mixing the water temperature.
- Connection: by 2 flexible M10 x 1/2" of 35 cm.
- Closure type: 35 mm ceramic.
- Material: hybrid (Aluminum Alloy and Zinc).
- Complies with water saving regulations (Less than 4-9 Lt/Min. at 3 bars).

✓ Includes: Installation set for horseshoe fixation and 2 flexibles.

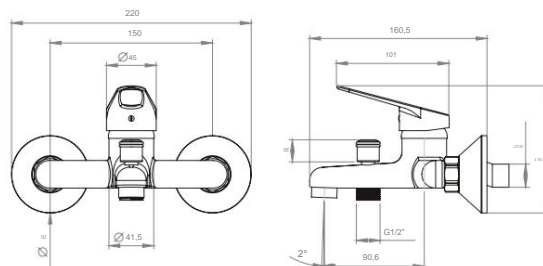


SINGLE LEVER TUB SHOWER

COD. 20CI5203000

- Handle with a 90° turn that allows mixing the water temperature.
- Connection: By 2 eccentric SG 1/2 "x 3/4".
- Closure type: 35 mm ceramic.
- Material: hybrid (Aluminum Alloy and Zinc).
- Complies with water saving regulations (Less than 4-9 Lt/Min. at 3 bars).

✓ Includes: 2 S-Connector, 2 bells, flexible 1.50 mts., shower and bracket.





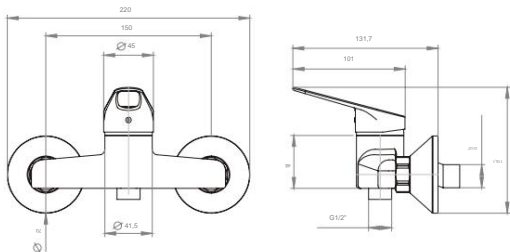


SHOWER MIXER

COD. 20CI5303000

- Handle with a 90° turn that allows mixing the water temperature.
- Connection: By 2 S-Connector SG 1/2 "x 3/4".
- Closure type: 35 mm ceramic.
- Material: hybrid (Aluminum Alloy and Zinc).
- Complies with water saving regulations (Less than 4-9 Lt/Min. at 3 bars).

✓ Includes: 2 S-Connector, 2 bells, flexible 1.50 mts., shower and bracket.

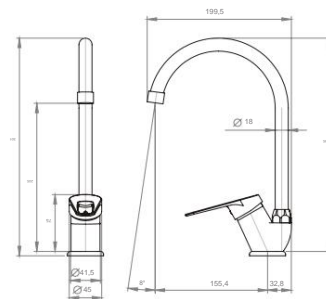


KITCHEN FAUCET MIXER

COD. 20CI5603000

- Handle with a 90° turn that allows mixing the water temperature.
- Connection: By 2 S-Connector SG 1/2 "x 3/4".
- Closure type: 35 mm ceramic.
- Material: hybrid (Aluminum Alloy and Zinc).
- Complies with water saving regulations (Less than 4-9 Lt/Min. at 3 bars).

✓ Includes: Installation set for horseshoe fixation and 2 flexibles.



# Illinois

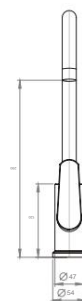


SINGLE LEVER  
KITCHEN FAUCET

COD. 20IL5603000

- Handle with a 90° turn that allows mixing the water temperature.
- Connection: by 2flexible M10 x 1/2" of 35 cm.
- Closure type: 35 mm ceramic.
- Material: High resistance polymer.
- Complies with watersaving regulations (Less than 4-9 Lt/Min. at 3 bars).
- Complies with Chilean standard NCH700-2011.

✓ Includes: FastFix installation set (Stretto) and 2 hoses.



# Isabella / Arizona



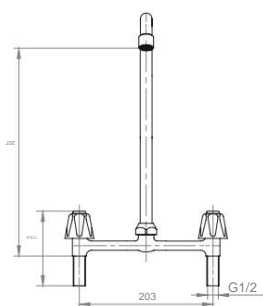
DOUBLE HANDLE  
ISABELLA KITCHEN FAUCET

COD. 20PL1003111

- Opening of the water passage with counterclockwise rotation.
- Connection: 2 flexible M10 x 1/2" of 35 cm.(Not included).
- Hybrid body (aluminum and zinc alloy), Stainless Steel Spout (SS304).
- Non-displaceable stem.
- Complies with water saving regulations (4-9 lt/min. at 3 bars).



Includes: Installation set for plastic nut.



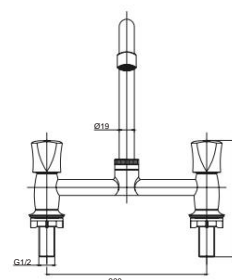
DOUBLE HANDLE  
ARIZONA KITCHEN FAUCET

COD. 20AZ1003000

- Opening of the water passage with counterclockwise rotation.
- Connection: 2 flexible M10 x 1/2" of 35 cm.
- High resistance polymer body (ABS), stainless steel spout (SS304).
- Material: High resistance polymer.
- 1/4 turn stem.
- Complies with water saving regulations (4-9 lt/min. at 3 bars).



Includes: Installation set by fixing nut.



# Plumber line

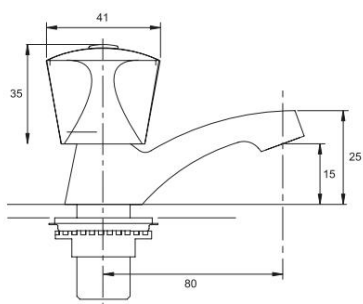


WASHBASIN FAUCET

COD. 20PL0101000

- Opening of the water passage with counterclockwise rotation.
- Connection: By 1 flexible 1/2" of 35 cm.
- Material: Brass.
- 1/4 turn stem
- Complies with water saving regulations (4-9 lt/min. A 3 bares).

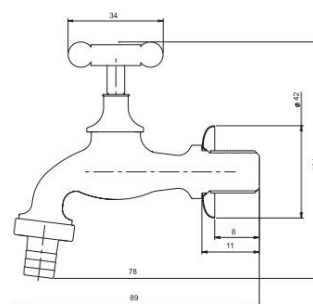
✓ Includes: Installation set for horseshoe fixation and 1 flexible.



WASHER FAUCET WITH FLANGE

COD. 20PL0503103

- Opening of the water passage with counterclockwise rotation.
- Connection: By 1/2" HE threaded union.
- Movable stem.





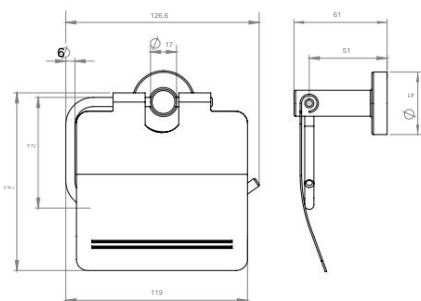
# York line



ROLL HOLDER

COD. 21PL0000100

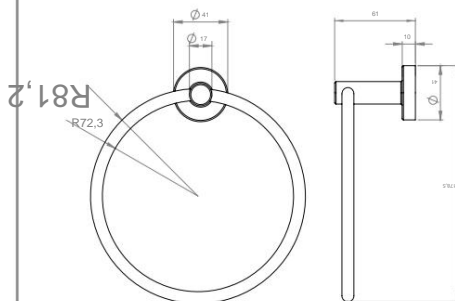
- Material: Metallic.
- ✓ Includes: Installation set and fixings.



TOWEL RING

COD. 21PL0000101

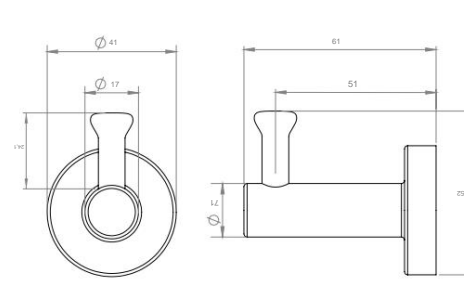
- Material: Metallic.
- ✓ Includes: Installation set and fixings.



PERCHA SIMPLE

COD. 21PL0000104

- Material: Metallic.
- ✓ Includes: Installation set and fixings.



# Benton line

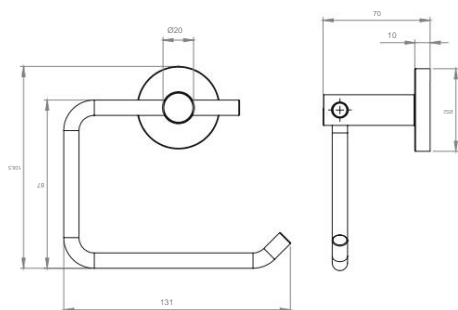


ROLL HOLDER

COD. 21BE0000110

- Material: Metallic.

✓ Includes: Installation set and fixings.

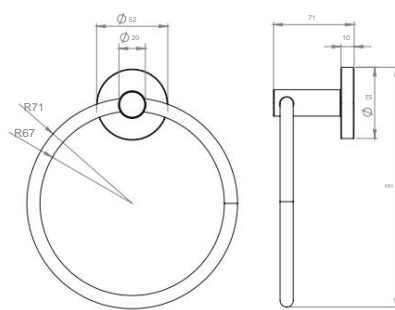


TOWEL RING

COD. 21BE0000111

- Material: Metallic.

✓ Includes: Installation set and fixings.

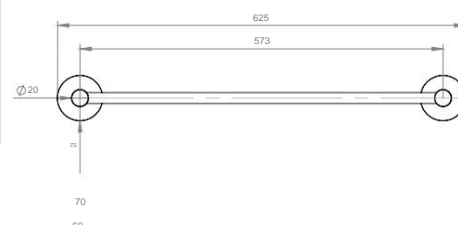


TOWEL BAR

COD. 21BE0000113

- Material: Metallic.

✓ Includes: Installation set and fixings.

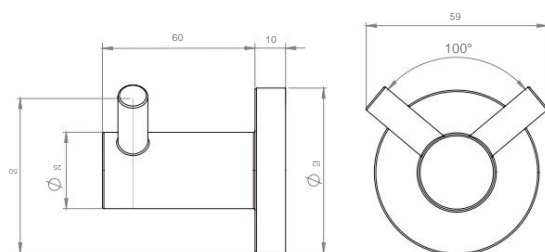




DOUBLE HANGER

COD. 21BE0000114

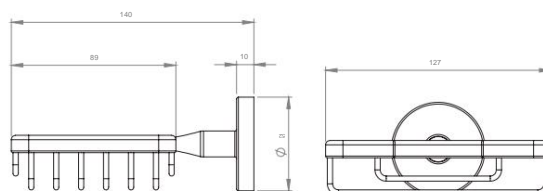
- Material: Metallic.
- ✓ Includes: Installation set and fixings.



SOAP HOLDER

COD. 21BE0000116

- Material: Metallic.
- ✓ Includes: Installation set and fixings.



# Aura Line

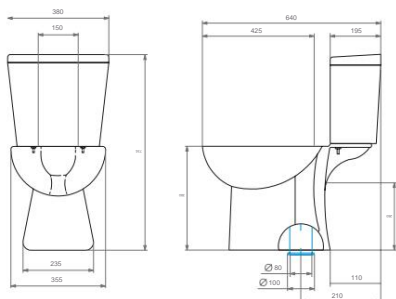


FULL KIT SANITARIO VERTICAL

Element	Code
Cup	60AU1005000
Pond	60AU3001050
seat and lid	60AU1901050
Sleeve	21PB3001001

- Dual Wash flush drive down.
- Vertical outlet to floor: 210 mm.
- Vitrified earthenware material.
- Installation with Sleeve.
- Complies with NCh 407 standard (high efficiency and good performance)

✓ Includes: Set of fixings for bowl, fixings and mechanisms for pond.

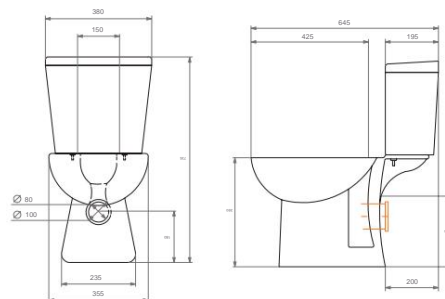


FULL KIT SANITARIO HORIZONTAL

Element	Code
Cup	60AU1105000
Pond	60AU3001050
seat and lid	60AU1901050
Sleeve	21AU3005000

- Dual Wash flush drive down.
- Horizontal outlet to wall: 180 mm.
- Vitrified earthenware material.
- Installation with WC Aura seal (21AU3005000) not included.
- Complies with NCh 407 standard (high efficiency and good performance)

✓ Includes: Set of fixings for bowl, fixings and mechanisms for pond.



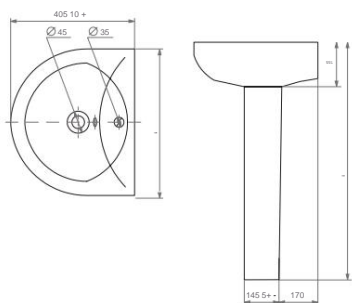


### FULL KIT SANITARIO VERTICAL

Element	Code
Washbasin	60AU2001000
Pedestal	60AU4101000
Drain	20ST4600302
Siphon	20PB5003004

- Vitreous earthenware vanity, white color controlled by Pantone.
- Sink: 13 Kg
- Pedestal: 13 Kg.
- Complies with NCh 407 standard.

✓ Includes: Wall fixings.



### COMPLEMENTS



COD. 21PB3001001 MANGUITO



COD. 1AU300500 SELLO



CODE 20ST4600302 DRAIN



Cod. 20PB5003004 SIPHON









MOSAIC CHILE SA

Av. of the South Valley 570, 4th  
Floor, Huechuraba, Santiago.

NO.56-9,YANSHANHE ROAD  
NORTH,BEILUN,NINGBO,CHINA  
Email: sales@nbplumbtech.com

[www.nbplumbtech.com](http://www.nbplumbtech.com)